

# Student Thesis Competition (STC) Season 5 on “Re-imagining Urban Rivers”

Guarding The River Ganges -  
Mirzapur's Comprehensive Plan for Sustainable  
Wastewater Management and Reuse

Student Name : Charu Middha  
Course Discipline : B . Plan

## INTRODUCTION

### Aim

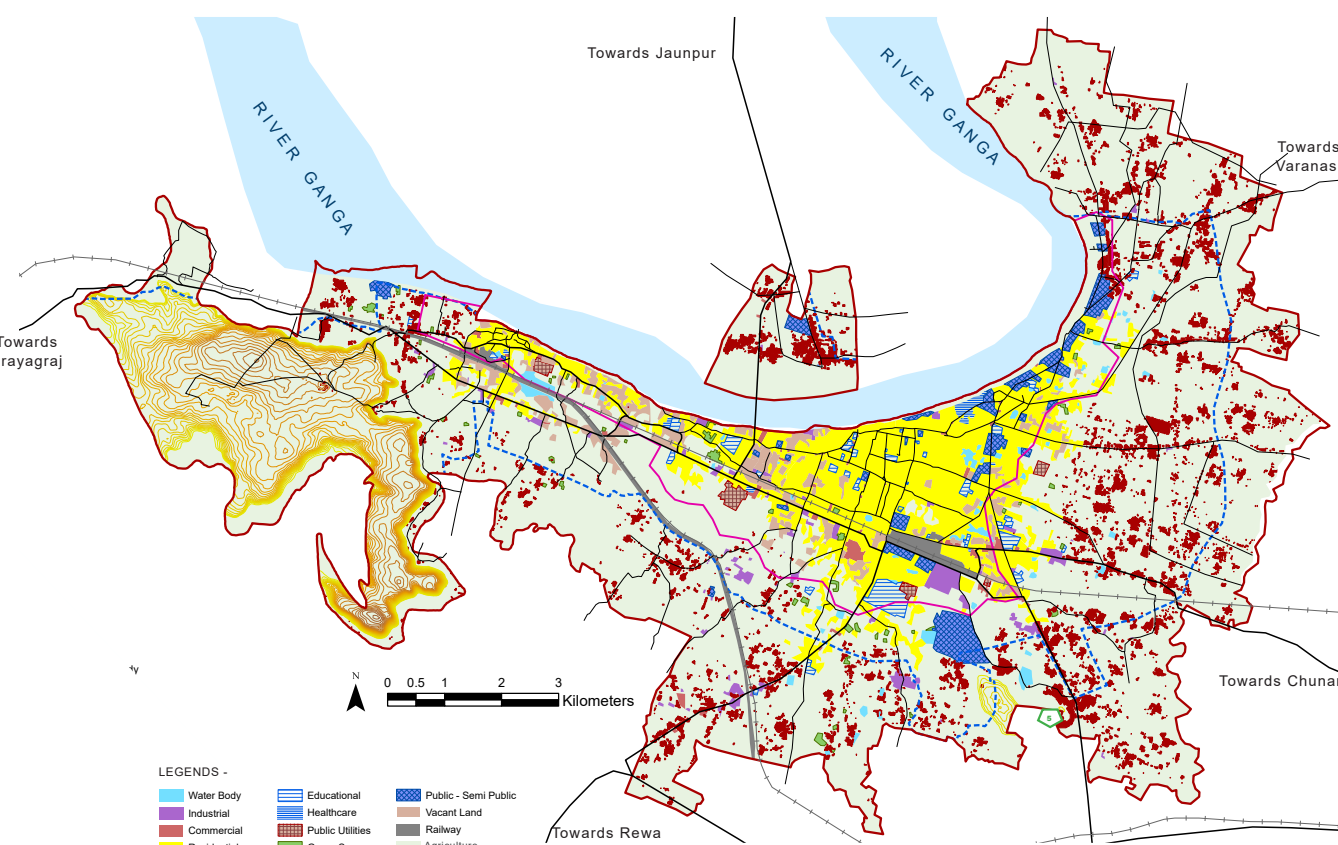
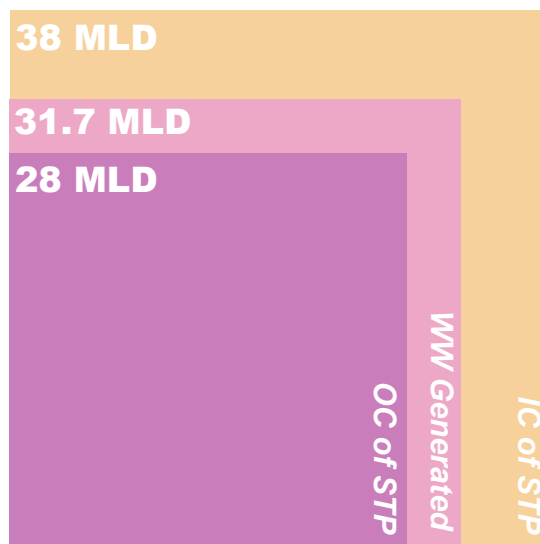
To develop a **comprehensive strategy for wastewater management**, focusing on reducing river pollution and fostering a circular water strategy through reducing and reuse practices.

### Wastewater Scenario

Study Area (MVDA) – 114.85 sq. km

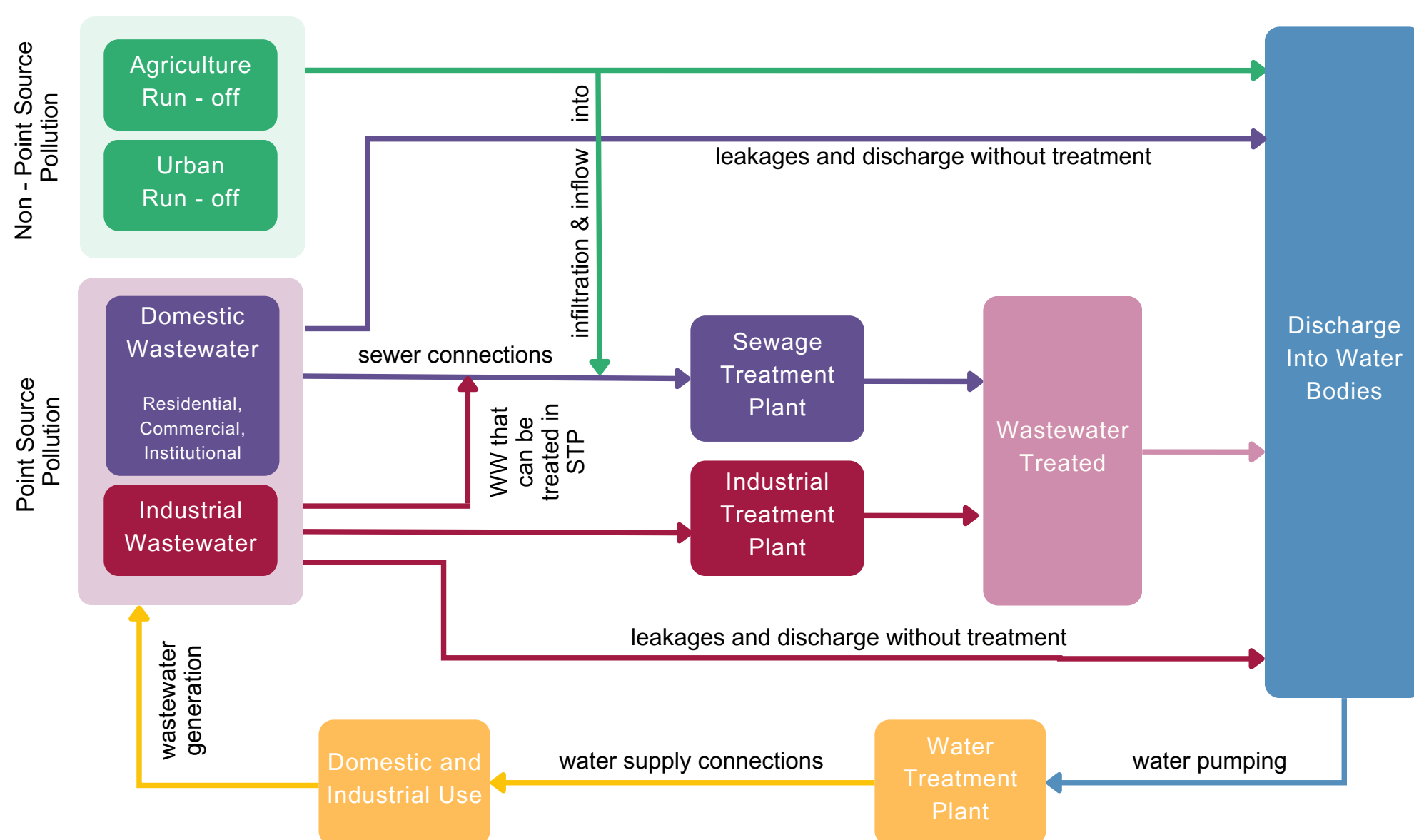
Population (2011) – 3.53 L

Water Consumption – 39.7 MLD

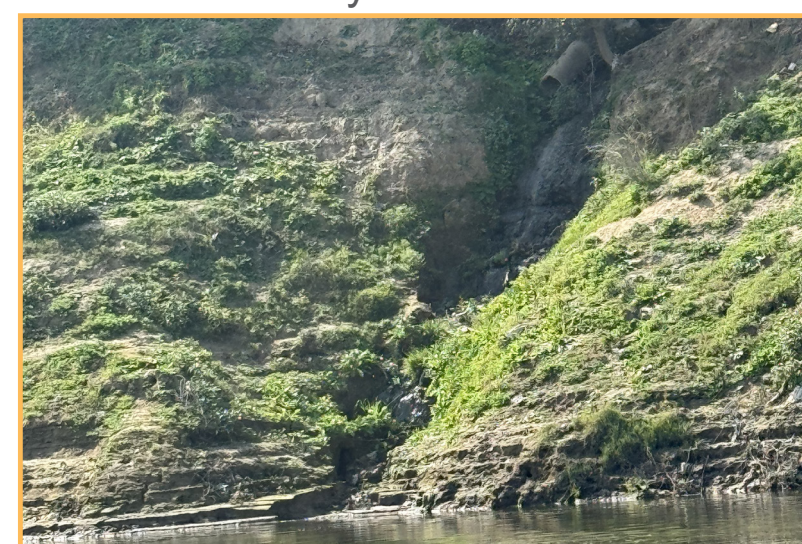


## KEY ISSUES

### Existing Wastewater Flows



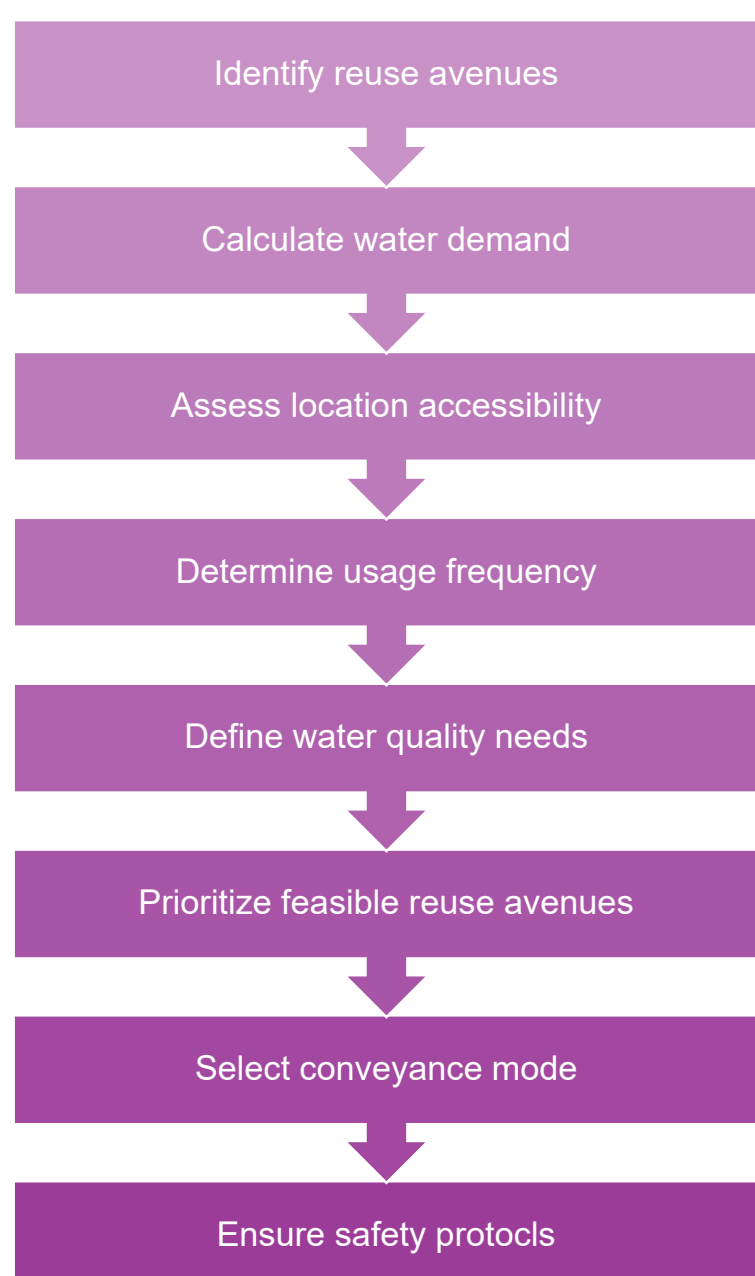
Oliyar Drain



Public Club Drain

## PROPOSALS AND WAY FORWARD

### Identification of Potential Users



### Desired Wastewater Flows

